

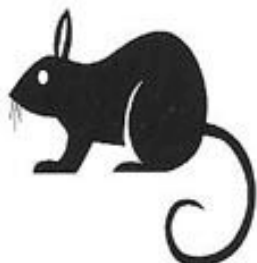
Chinese Zodiac Signs

The Chinese Zodiac is based on a lunar calendar, so for birthdays in January / February it is necessary to check the exact date of the Chinese New Year to determine your birth sign

RAT

Imaginative, passionate, wise & intense. *Most compatible with Dragon or Monkey.*

2008, 1996,
1984, 1972,
1960, 1948,
1936



OX

Bright, inspiring, patient & hard working. *Marry a Snake or a Rooster*

2009, 1997
1985, 1973,
1961, 1949,
1937



TIGER

Loyal, courageous, generous & enthusiastic. *A Horse or Dog will bring you happiness.*

2010, 1998,
1986, 1974,
1962, 1950,
1938



RABBIT

Shy, discreet, prudent & honest. Luckiest sign. *Ram or boar is your ideal partner.*

2011, 1999,
1987, 1975,
1963, 1951,
1939



DRAGON

Active, healthy, dynamic & brilliant if eccentric. *Marry a Monkey or a Rat late in life.*

2012, 2000,
1988, 1976,
1964, 1952,
1940



SNAKE

Clever, opportunistic & reflective, desires to help others. *Team up with a Rooster or Ox.*

2013, 2001,
1989, 1977,
1965, 1953,
1941



HORSE

Popular, noble, attractive and enterprising. *Marry a Tiger or Dog.*

2002, 1990,
1978, 1966,
1954, 1942,
1930



RAM

Adaptable, gentle, elegant. With a love for Art & Music *Boars & Rabbits but never an Ox as life partner.*

2003, 1991,
1979, 1967,
1955, 1943,
1931



MONKEY

Intelligent, influential & ambitious. A gifted achiever. *Avoid Tigers, seek a Dragon or a Rat.*

2004, 1992,
1980, 1968,
1956, 1944,
1932



ROOSTER

Obliging, pioneering & brave. A little vain with a need for appreciation. *Rabbits are trouble, Ox or Snake ideal.*

2005, 1993,
1981, 1969,
1957, 1945,
1933



DOG

Loyal, faithful & unselfish. with a need for tenderness. *Look to the Horse or Tiger but avoid Dragons.*

2006, 1994,
1982, 1970,
1958, 1946,
1934



BOAR

Tolerant, persevering and chivalrous. Prosperous and generous. *Avoid other Boars and marry a Ram or Rabbit*

2007, 1995,
1983, 1971,
1959, 1947,
1935,

